



**RIEBSAMEN**



**Glasboy®**

Innovative products from Maschinenbau Riebsamen for making work easier  
Maschinenbau Riebsamen, Bierstetter Strasse 1, D 88348 Allmannsweiler



# Glasboy® 380

## The Glasboy® 380 from Maschinenbau Riebsamen: Quality "Made in Germany"

The Glasboy® 380 is a German product made in the Riebsamen family-owned business in Allmannsweiler, Germany.

The frame with the chassis is produced in the welding shop, after which it is sandblasted, primed and stove-enamelled at 220°. The Glasboy® is fully assembled and put into operation in the company's assembly shop. The German TÜV technical inspectorate carries out a safety and static test with overload test on every Glasboy®. Every Glasboy® is CE-certified.

## The Glasboy® in operation

The Glasboy® picks up the glass pane from the glass frame (on a lorry or on the ground) by suction, and transports it through the site and the building. It deposits the pane at the window where it is to be inserted, the permanently attached suction head at the front of the jib is applied to the pane and lifts it into the window frame.

The radio remote control enables very sensitive operation. The permanently attached suction head permits a shop window pane to be moved from the outside, diagonally inwards through the window frame, and then inserted from the inside outwards.

The suction-cup quick-mount device (see supplementary equipment) also permits side transport and insertion of the glass panes without putting them down.



Picking up the pane



Transporting the pane to the site



Inserting the pane by remote control

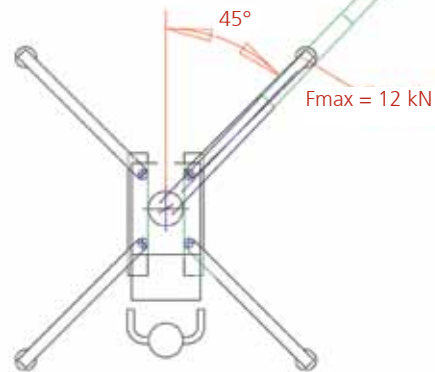
## Technical Data **Glasboy® 380**

Glasboy® 380	3 hydraulic pusher elements and manual arm extension (max. 6.80 m jib length)
Overall height:	1950 mm
Overall width on the rubber chains:	900 mm
Overall length:	3190 mm
Weight with front suction head:	2000 kg
Suction head:	175 kg
Pivoting range:	330° 4 continuously pivotable outriggers
Paintwork:	red RAL 3002 / black RAL 9005
Engine:	Kubota diesel - 17 HP 3 cylinders with electric starter and water cooling

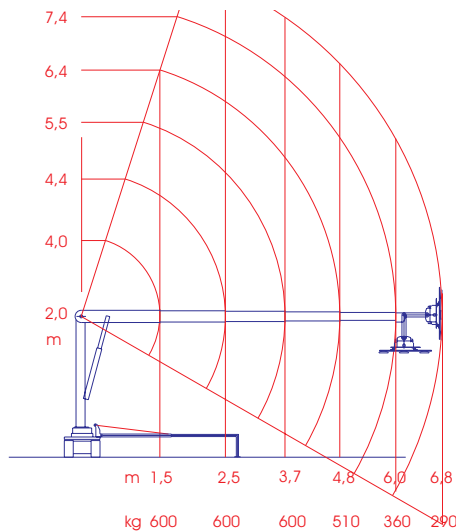
## Standard features **Glasboy® 380**

Euro radio control	
Electric drive 220 V	
4 attachment eyes for transportation	
Attachment eyes for loading	
Hydrostatic drive with automatic brake	
Inspected by the German TÜV technical inspectorate	
Three-dimensional front suction head:	<ul style="list-style-type: none"> <li>- Lifting capacity 600 kg</li> <li>- Continuous slewing ring</li> <li>- Hydraulic lift/tilt</li> <li>- Can be switched to transport</li> <li>- Hydraulic pivoting range</li> <li>- Suction-cup side transport max. 500 kg</li> </ul>

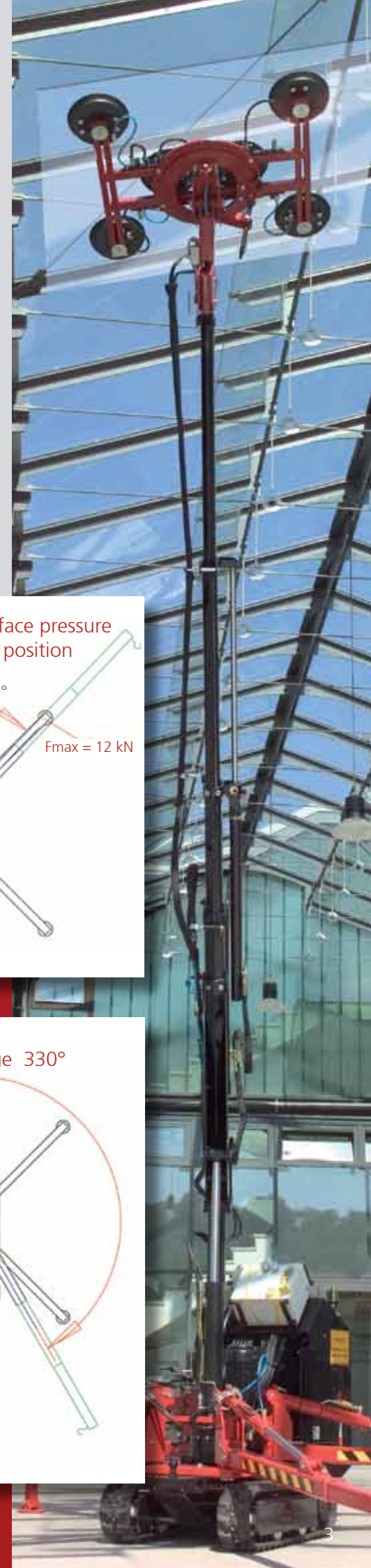
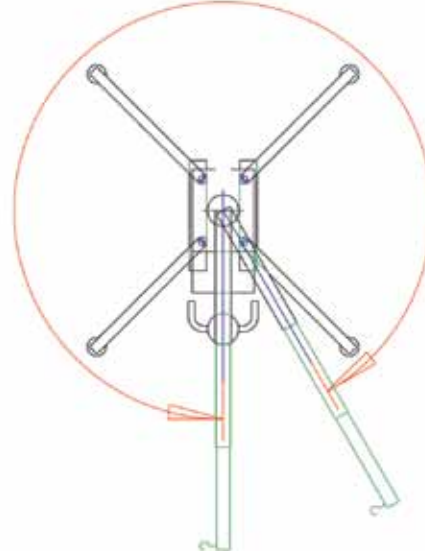
Advantageous surface pressure  
Ideal working position



## Glasboy® 380 / 600 kg suction system



## Pivoting range 330°





# Glasboy® 510

**The Glasboy® 510  
from Maschinenbau Riebsamen:  
Quality "Made in Germany"**

The Glasboy® 510 is a more powerful and larger machine with greater lifting capacity. It goes without saying that this model is also CE-certified and tested by the German TÜV technical inspectorate.

Riebsamen has also made custom-built models, e.g. for yacht glazing and for mullion/transom façades in high-rise construction.

Other façade elements, such as sandwich elements, timber and metal plates can also be picked up.

With a manual 3 m extension, it is possible to lift a load of 500 kg up to a height of 11 m.

Thanks to a hydraulic telescopic arm, it is possible to hydraulically extend in a horizontal manner at the top via the remote control when the Glasboy® is extended.

**Quality „Made in Germany“**

Our Glasboy® is designed and manufactured exclusively in the company's own workshops in Germany by trained specialists.



Internal glazing at a height of 8 m



Overhead glazing at a height of 8 m



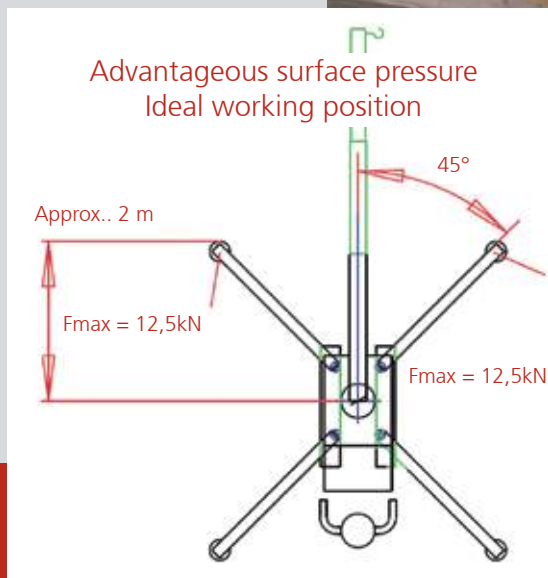
Transport position

**Technical data** ***Glasboy® 510***

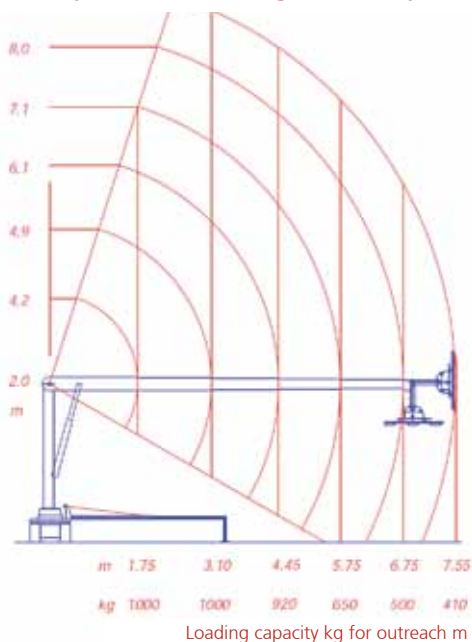
Glasboy® 510	3 hydraulic pusher elements and manual arm extension (max. 9.00 m jib length)
Overall height:	1970 mm
Overall width on the rubber chains:	950 mm
Overall length:	3800 mm
Weight with front suction head:	2650 kg
Suction head:	175 kg
Pivoting range:	330° / 4 continuously pivotable outriggers
Paintwork:	red RAL 3002 / black RAL 9005
Engine:	Kubota diesel - 26 HP 3 cylinders with electrical starter and water cooling

**Standard features** ***Glasboy® 510***

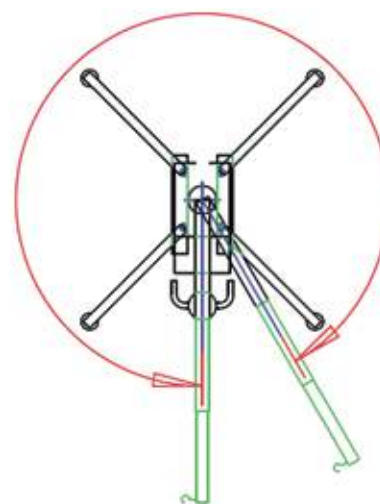
Euro radio control	
Electric drive 380 V	
Hydraulic hose and cable reels	
4 attachment eyes for transportation	
Attachment eyes for loading	
Hydrostatic drive with automatic brake	
Inspected by the German TÜV technical inspectorate	
Three-dimensional front suction head:	<ul style="list-style-type: none"> <li>- Lifting capacity 1000 kg</li> <li>- Continuous slewing ring</li> <li>- Hydraulic lift/tilt</li> <li>- Can be switched to transport</li> <li>- Hydraulic pivoting range</li> <li>- Suction-cup side transport max. 600 kg</li> </ul>



**Glasboy® 510 / 1000 kg suction system**



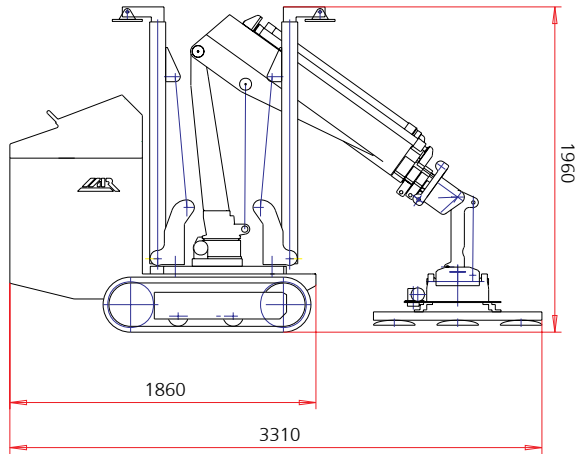
**Pivoting range 330°**



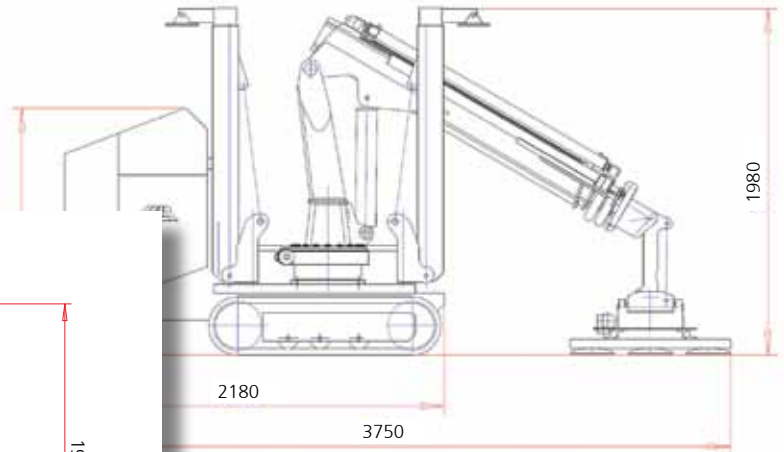
Subject to technical modifications. All rights reserved.



**Top performance  
and high quality**



**Glasboy 380**



**Glasboy 510**



**INFO**

Siegfried Riebsamen with a selection of his innovative machinery

# Supplementary equipment



Side suction-cup quick-mount device



Suspended glass suction cup



Suction head 1000 kg



Hydraulic track adjustment



Cable reels



Lashing chains



Crane arm extension



Telescopic jib



Crane load suspension



Base plate



Weather protection hood



Glass suction cup, spherical

You will find all the additional components on our website at: [www.riebsamen.de](http://www.riebsamen.de).  
Technical data are subject to change at any time without prior notice in the interest of product improvement. All rights reserved.



**Sensitive, powerful,  
reliable!**

Working with the Glasboy® is fun when millimetre accuracy is needed - thanks to the highly sensitive radio control. It allows the crane operator to tilt, pivot and rotate the suction head for safe and effortless pane placement.

Safety in handling the machine is very important to ensure efficient and productive work.



**ADVANTAGE**  
Suspended suction cup



**ADVANTAGE**  
Transport through doors

Siegfried Riebsamen has achieved excellent results in deploying the Glasboy® with remote control in Germany and abroad - for transporting glass panes on the most difficult building sites, for inserting panes at heights of as much as 8.9 m, including placing overhead ceiling panes.



**ADVANTAGE**  
Overhead work

**We're not one of the biggest,  
but one of the best!**

Maschinenbau **RIEBSAMEN**  
GmbH & Co. KG  
Bierstetter Straße 1  
D 88348 Allmannsweiler  
Tel. +49 7582 791  
Fax +49 7582 792  
info@riebsamen.de  
www.riebsamen.de



**ADVANTAGE**  
Simple transport